



www.mikrons.com.tr

Sinpaş Holding in Brief

Sinpaş Holding, representing foremost industrial and finance companies, is a group of affiliates owned by the Çelik family in Turkey.

The forming Sinpaş Holding has started by the Sinpaş Yapı Endüstrisi ve Ticaret A.Ş. in 1974 by Dr. Avni Çelik, civil engineer. As of the 1990's, Sinpaş has been one of the leading developers in the real estate sector in Turkey.

Sinpaş Holding consists of more than 28 companies, almost all of which are the leader in their respective fields. Primary activity fields of Sinpaş Holding are property and luxury housing projects, residences and commercial real estate production and management, leasing and financial services, technical ceramic production, calcite and talc production, wooden furniture manufacturing, real estate brokerage and leasing services. In addition to it's affiliates, the group also has stakes in many companies with many domestic and foreign partners.

As a respected brand, Sinpaş Holding with its strong collaborations along with its knowledge and experiences in the Turkish market has grown in its primary fields of activity and had extended into world markets.

Sinpaş GYO(REIT) and Servet GYO(REIT) are listed companies in Sinpaş Holding 51% of the Sinpaş GYO is owned again by Çelik family and the remaining 49% is the free float in BIST. With the founding of Sinpaş GYO under the Real Estate Company Conversation project, Sinpaş Holding has aimed to combine the group's estate activities under one roof. The aim of the second stage of this project is to execute public offering of 49% of Sinpaş GYO shares to strengthen the financial structure. Through the procurement of new properties for housing development, creating financial resource for exciting housing projects and also for developing now housing projects in other cities such as Ankara, Muğla, İzmir and Adana. Following the public offering if its shares, SinpaşGYO has strengthened its position by increasing its competitive strength and by developing its corporate profile with the addition of respected corporate investors to its shareholders; its has combined its high brand strength with its developing corporate structure.

Sinpas Holding is formed by Industrial Real Estate, Service Finance and Energy divisions which includes 28 companies in it's network.





Sinpaş Gayrimenkul Yatırım Ortaklığı A.Ş.

Boasting a 40-year background and expertise in the real estate market, the Sinpaş reshaped their organization at the end of 2006 upon which it started to implement its activities for developing housing projects under the umbrella of Sinpaş REIT (GYO). Ranked second among top-demanded companies of the industry according to a research conducted by Capital in 2010, Sinpaş REIT (GYO) is a public real estate investment trust established pursuant to the relevant regulations of the Capital Market Board. Sinpaş REIT (GYO) is traded at the Istanbul Stock Exchange with a public share of 49% and a market value of 594 million TL. Thanks to a strong workforce, a secure financial framework and sound management Sinpaş REIT (GYO) continues to create value for its shareholders and partners with 37+ of shares representing Sinpaş REIT (GYO) capital actually circulating in the market. With its portfolio size of 1.85 billion TL, Sinpaş REIT (GYO) is ranked third among 21 real estate investment trusts currently traded in ISE.



Servet Gayrimenkul Yatırım Ortaklığı A.Ş.

SERVET GYO was established with the aim of gathering all commercial real estate projects that are in the portfolio of Sinpaş Holding and all of the accumulated experience and knowledge under the same roof. Commercial Real Estates, Shopping Malls, Industrial Service buildings, etc... are managed by SERVET GYO in the Holding.



Seranit GROUP

As being the first ceramic producer of Turkey, Seranit produces flooring and sidings by the transfer of glass in to ceramic under the world renowned "Seranit" brand in one of the largest integrated facilities in Europe. The company has yearly 8.5 million sqm production capacity and its sales network includes 258 point of sales in Turkey with more than 50 showrooms and 82 point of sales in 25 foreign countries. The company exports the most of its products to the foreign markets.



Arı Leasing A.Ş.

Arı Leasing has joined the Sinpaş Holding in May 2007 after getting the complete dividends from Baser Grup. Joining the Sinpaş Holding let Arı Leasing to enhance capital power and operation practices in the market. Arı Leasing continues to grow by providing a new vision in the sector with the permission of the Housing Financing activities, which was obtained from the Banking Regulation and Supervision Agency of the Turkish Republic in 2014, to achieve individual acquisitions of individual consumers by signing a first in Turkey.



Mülk Gayrimenkul Yatırım A.Ş.

Mülk Real Estate Investment manages marketing, leasing, operation and project development works of its commercial portfolio of 774.000 m2. The commercial real estate portfolios under management of Mülk Real Estate Investment are predominantly situated in the European side of İstanbul. Flatofis, Deposite, Çelik&Özer Business Center, Çelik&Yenal Industrial Center, Çelik&Törün Industrial Center, Çelik&Tüzün Logistics Center and Çelik&Çelik Logistics Center are also among the industrial structures managed by Mülk Real Estate. OSWE project in Frankfurt, Germany, which is a Servet REIT, is another project that has joined Mülk Real Estate's management.



Oswe A.Ş.

With its name, OSWE Real Estate connects the East with the West. Being a sales and marketing company, OSWE is the part of the international and commercial real estate group Servet GYO. With purchasing the 17 hectares Necker-mann area in Frankfurt district Fechenheim, for the first time, Sinpaş ventures the bridge building from East to West. It is the first commitment to Germany the high-equity investor is giving.



KAT A.Ş.

KAT Turizm Gayrimenkul Yatırımları ve İşletme A.Ş. is combined from Sinpaş Yapı Endüstrisi ve Tic. A.Ş., Qatari Diar İstanbul Gayrimenkul Yatırımları A.Ş. and Eksim Yatırım Holding A.Ş. in Turkey. Qatari Diar Real Estate Company was established in 2005 by the Qatar Investment Authority, the sovereign wealth fund of the State of Qatar.



Prodek Yapı Dekorasyonu Ticaret A.Ş.

Until 2004 the Prodek was producing high quality wooden furniture for kitchens and bathrooms under the "Vanucci" brand, only to furnished services of Sinpaş projects, however since 2005 it has expanded its operations to the domestic and international markets.



GYE Elektrik Üretim A.Ş.

GYE has founded to evaluate renewable energy sources of Turkey without increasing any carbon emissions to atmosphere. GYE has currently working on Hatay city 30 MW project and Edirne city 130 MW Project principally. GYE is currently analysing several geothermal ,green-energy and cogeneration projects in Turkey.



Mikron'S started operations in year 2004, in city Niğde which is well known about white and pure Calcium Carbonate reserves. Mikron'S faced a high demand from the market due to wide product range and quality.

Even to evaluate, Turkey's local resources and not to expose country's entrepreneurs high import cost of performance minerals, that can be produced locally, Mikron'S used last version technology of it's kind when plant was erected. Initial production capacity, was 120.000 tons per year before putting grindig and seperation systems mills in to service, to produce 250.000 tons per year. Mikron'S also operating it's own mine which is the key role in this business segment.

Mikron'S has started to export to surrounded markets under a brand name TURKCARB® and faced high demand. Other industrial minerals like Talc, Baryte, Kaolin, Mica, etc... are also in our product range to evaluate cost advantages of country's own resources.

Research and Development activities will shape the future of Mikron'S, with the help of qualified academic and experienced staff that mainly focused on functional usage of industrial minerals.

Main Turkish and International Quality Management systems have been operated in Mikron'S, to satisfy our customers and suppliers demands.

Mikron'S continues for investing in industrial minerals mainly Calcium Carbonate in Mugla/Turkey. As a second plant in Turkey, Mugla plant will dedicate its capacity mainly for exports .

Mikron'S proudly deciares to continue investments in industrial mineral segments to serve our customers.



QUARRIES AND RAW MATERIAL

Calcium Carbonate as a vital mineral, has so many application fields in industry. Reserves in Turkey specifically differ from other reserves in the world due to its whiteness and puriness. Mikron'S operating its own quarries which are capable of supplying long term raw material demands. Quarries are located very close to plants and operated by modern machineries .

Adaptive Sorter technology implemented in Nigde quarries to keep raw material parameters under fully controlled .

Pretreatment facility of quarries are located on 350 hectares area. Mikron'S also started to operate owned Talc mines since 2012 in Turkey. Since 2014, Mikron's also started to export several industrial raw materials especially Calcium Carbonate to several applications worldwide.



FACTORIES

Mikron'S initial investment was ultra fine (UF) coated Calcium Carbonate production in city Nigde in Turkey in 2004. After settling UF lines Mikron'S also completed investment for fine product lines in year 2005 to produce with high capacities.

Mikron'S investments continued with Ceramic lined Talc Plant , over separation micronisation plant, chips and granule plant and finally lamellar Talc Plant as years passes by. All precautions taken to overcome any problems related with environmental and workforce issues. Food Safety Programs and Hygenic procedures are approved by independent and governmental institutions. Mikron'S Nigde plant is certified by Ministry of Food and Agriculture.

Mikron'S second's cooperated plant is located in Jeddah in Kingdom of Saudia Arabia (Jeddah II Industrial Area) with proposed capacity of 290,000 TPA which will be executed in two phases (Phase 1 has a designed capacity of 145,000 TPA, and Phase 2 will have an additional capacity of 145,000 TPA) to produce very white and pure especially coated calcium carbonate to serve KSA market.

Mikron'S started to adapt new separation and coating units to Nigde plant to increase production capacity of fine products .



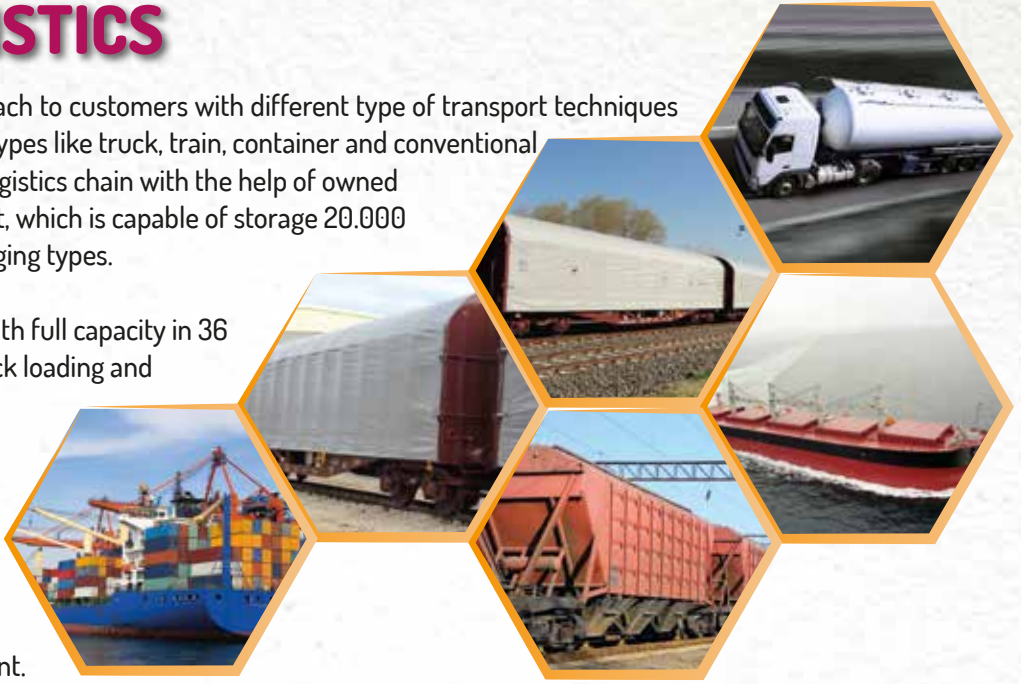
EXPORT AND LOGISTICS

Mikron'S high production capacity should reach to customers with different type of transport techniques in earliest convenience. Different transport types like truck, train, container and conventional shipping can be operated with operational logistics chain with the help of owned warehouses in the plant and Iskenderun Port, which is capable of storage 20.000 tonnes of end products with different packaging types.

Mikron'S able to load conventional vessels with full capacity in 36 hours, with the help of independent and quick loading and unloading systems and terminals.

Mikron'S operating its own vessels and train vagoons to optimize logistics for own need.

Silo Truck, Pallettized, Bigbag, Bulk – Silo Containers are type of packaging could be operated in all warehouses, terminal and plant.



INDUSTRIES WE SERVE

Mikron'S always take care the responsibility of service, that should be assisted by it's products.

Mikron'S supply products and services, to solve the problems of it's customers.

Mikron'S products used as functional additives to decrease costs while increasing product properties.





CALCIUM CARBONATE

Mikron'S Calcium Carbonate grades are branded as TURKCARB® in general, to let manufactures to produce high quality products in many applications. Calcite (CaCO₃) found in nature in marble, limestone and chalk forms with different crystal shapes which differs from each other by crystal shapes.

Depending on the amount of impurities, whiteness parameters many fluctuate. Deviation of Silicate (SiO₂) contents will also effect hardness values of the material. TURKCARB® high brightness and negligible abrasion values features the quality of TURKCARB® raw material quality level.

CHEMICAL PROPERTIES OF THE RAW MATERIAL

CaCO ₃	> 99.5 %
Fe ₂ O ₃	> 0.20 %
MgCO ₃	> 0.01 %
SiO ₂	> 0.01 %
Al ₂ O ₃	> 0.02 %
HCL Insoluble Content	> 99,5 %

PHYSICAL PROPERTIES

Density (ISO 787-10)	2.7 gr/cm ³
MOHS Hardness	3
Refractive Index	1.59

GENERAL PROPERTIES

Lightness (L, ASTM E-313) Elrepho 450 X min	99 %
Brightness (Ry, DIN 53163) Elrepho 450 X min	96 %

WHITENESS (ELREPHO 3300 SPECTROPHOTOMETER DIN 53140)

Ry	%94 - 97
----	----------



Micronised Calcium Carbonate

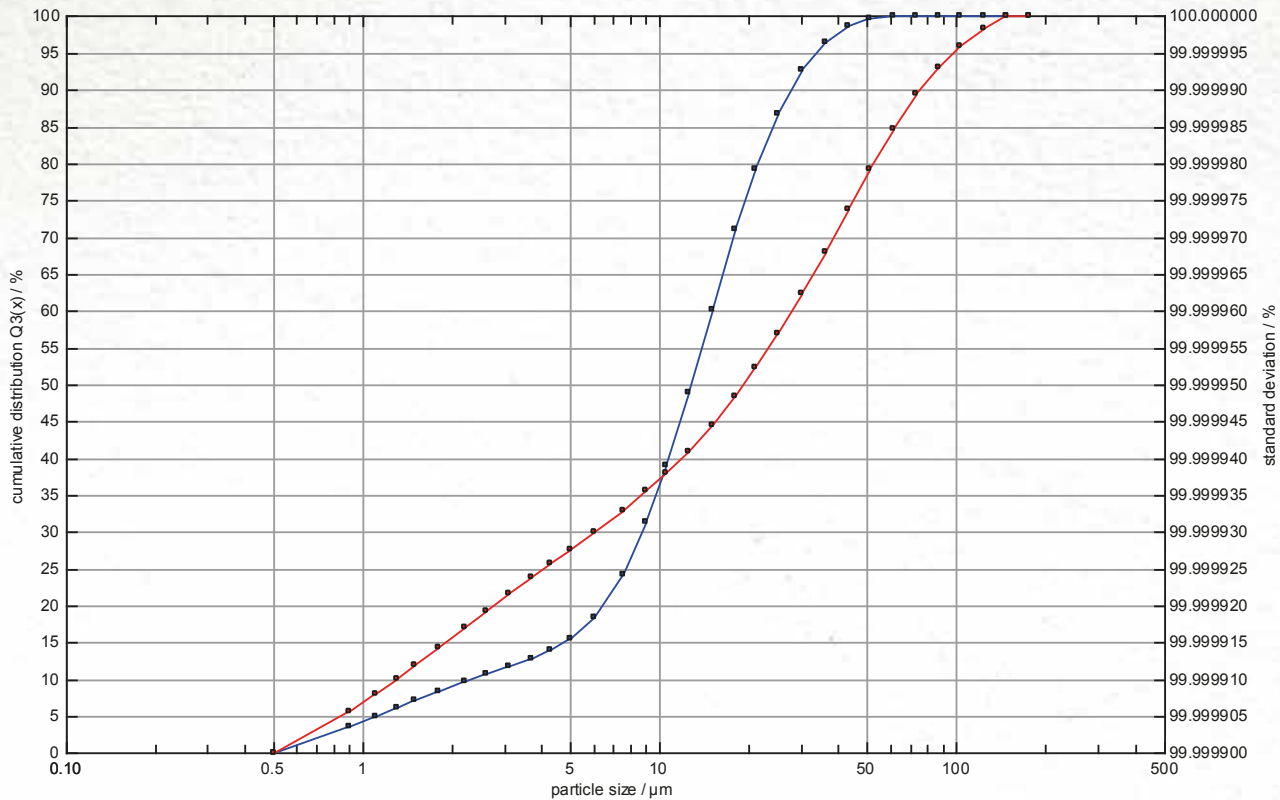
TURKCARB® grades are very fine GCC (Ground Calcium Carbonate) which is also featured with fine particle size distribution. Starting from 90% fraction under 2 microns fineness till 100 microns median size.

Mikron'S able to produce outstanding products to offer superior surface finish solutions to paint, paper and plastic industries.

TURKCARB® UF	TURKCARB® 2K
TURKCARB® 95	TURKCARB® 3
TURKCARB® 75X	TURKCARB® 5
TURKCARB® 70	TURKCARB® 5K
TURKCARB® 65	TURKCARB® 10
TURKCARB® 1	TURKCARB® 15
TURKCARB® 1K	TURKCARB® 20
TURKCARB® 2	



Overseperated Calcium Carbonate



Decreasing the oil absorption of calcium carbonate will bring so many advantages to processors to decrease binder absorption, decreasing of manufacturing costs while using more calcium carbonate in the recipes.

Overseperated TURKCARB® grades are class of products group in which surface coating is not feasible due to coarseness of the particle decrease the oil absorption values.

- TURKCARB® 5K
- TURKCARB® 15K
- TURKCARB® 30K
- TURKCARB® 40K
- TURKCARB® 60K
- TURKCARB® 130K

Coated Calcium Carbonate

Usage of Coated TURKCARB® grades have many advantages in plastics and coatings. Day by day, more processors are shifting to coated grades due to;

- Low surface energy,
- High Hydrophobic effect,
- To get easy and homogeneous dispersion,
- Low oil, DOP and polymer absorption,
- Increase in mechanical properties,
- Increase chemical and mechanical strength,
- To get high quality surface and high brightness

- | | | |
|---------------------|-----------------|---------------|
| TURKCARB® UFC | TURKCARB® 65C | TURKCARB® 1KC |
| TURKCARB® 95C | TURKCARB® FP | TURKCARB® 2C |
| TURKCARB® WIN | TURKCARB® FP 55 | TURKCARB® 2KC |
| TURKCARB® WIN EXTRA | TURKCARB® FP 45 | TURKCARB® 3C |
| TURKCARB® 100C | TURKCARB® 1C | TURKCARB® 5C |
| TURKCARB® WPX | | TURKCARB® 10C |



CHIPS AND GRANULES

Mikron'S produce very white TURKCARB® CGR, CGR-H and DGR granules for decorative plasters, textured coatings and other applications. Mikron'S and TURKCARB® CGR, CGR_H, DGR grades can be used in wide range of applications like exterior decorative coatings, plasters and textured coatings. Particle distribution and colour parameters of Mikron'S and TURKCARB® CGR, CGR-H and DGR grades are so adjusted that, they can meet demands of global common recipes.

CALCIUM CARBONATE/CaCO₃

- Low binder absorption
- Dust free productions
- Homogenous particle distribution
- Black spot free products
- High production capacity
- Controlled tinting capability
- High and long lasting brightness
- Excellent optical effect and opacity

DOLOMITE/CaMg(CO₃)₂

- Low binder absorption
- High brightness
- Dust free products
- Acid resistance
- Homogenous particle distribution
- Black spot free products
- High production capability
- Perfect durability in exterior applications

Micronised Mikron'S Dolomite grades have wide usage in;

- General decorative, rust proofing paints
- PUR, polyester and epoxy resins
- ABS, SAN and other thermoplastics.
- Water based paints
- Plasters
- Matt Wall paints
- Undercoats and rustproofing primers
- Coil coatings
- Road marking paints
- Adhesives, silicone and sealing compounds

DOLOMITE

Dolomite is double carbonate of calcium and magnesium. Chemical formula of dolomite is clusters of CaMg(CO₃)₂ Extremely Pure and White dolomite deposits are found in Turkey, where name "marble" took its original name during history from Anatolia.

Homogenous crystalline structure white natural whiteness are all main parameters of Mikron'S Dolomite grades.

Usage of Dolomite improves weatherability and mechanical stability, reduces shrinkage and internal stress, eliminates crack development and water adsorption.



MICA

Mica is used as a pigment extender that also facilitates suspension, reduces chalking and mud cracking, prevents shrinking and shearing of the paint film. Mica increases resistance of the paint film seriously against water penetration, weathering and brightens the tone of colored pigments.

Mica also promotes paint adhesion in aqueous and oleoresinous formulations. It has high aspect ratio.

Mica preferred due to ;

- High aspect ratio (permeability reduction effect)
- Improvement of heat deformation
- Excellent wettability (oil absorption)
- Outstanding whiteness and purity
- Efficient barrier effect
- Prevents chalking, mud cracking
- Reduces shrinkage
- Increases water penetration resistance
- Good weathering resistance
- Adds matting effect
- Increases opacity

MICA B

MICA T

ASPOLIT

MICA

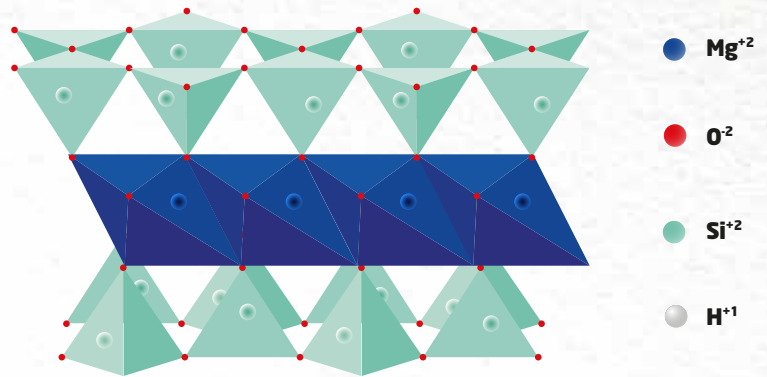
TALC

Talc is usually green, white, gray, brown or colorless. It is a translucent mineral with a pearly luster. It is the softest known mineral and assigned a hardness 1

The main characteristics of talc are:

- Naturally hydrophobic and organophilic
- Inert and resist very well to acids and alkalis
- The softest mineral in the world
- Good electrical and thermal insulating properties

Mikron'S Talc products can be classified into two main groups which are NODULAR and LAMELLAR grades in general.



When large amounts of Al substitute for "Mg" the mineral is known as pyrophyllite.



MIKRON'S NODULAR TALC

MIKRON'S TALK-S GRADES HAVE NODULAR CRYSTAL LATTICES. NODULAR CRYSTAL SYSTEM IS SIMILAR TO HEGZAGONAL, IT IS NOT LAMELLAR AND FLAT. MIKRON'S TALK-S GRADES ARE USED IN PAINT, RUBBER, FOOD AND COSMETICS INDUSTRY.

NODULAR grades are typical talc grades for enhancement of matting effect, hiding power and rheology in paint formulations. NODULAR talcs are also very important for food, pharma, cosmetics, rubber and paper applications. NODULAR Talc reserves are very seldom in the World.

Mikron'S Talk 3SX	Mikron'S Talk 15SX	Mikron'S Talk 20STD
Mikron'S Talk 5SX	Mikron'S Talk 2STD	Mikron'S Talk 10SX
Mikron'S Talk 5SXP	Mikron'S Talk 5STD	Mikron'S Talk 5KSTD

- High specific surface area
- Excellent film flexure formation
- Good hiding power
- Improved matting effect
- Non health hazard
- Traces of impurities



MIKRON'S LAMELLAR TALC

MIKRON'S LAMELLAR Talc grades are extremely white with high aspect ratio talc products in general. LAMELLAR grades increase barrier effect of the paint film by increasing hiding power, mud crack and weather resistance.

LAMELLAR Talc grades are White and produced with special grinding technique not to destroy it's natural lamellarity.

Mikron'S Talc PREMIER is fine, lamellar talc grade. Normally it is difficult to grind lamellar talcs. Lamellar talc can be micronised without distorting it's structure due to advanced technology of Mikron'S.

Mikron'S Talk PREMIER	Mikron'S Talk 40KN	Mikron'S Talk 5X
Mikron'S Talk 20	Mikron'S Talk 5XH	Mikron'S Talk 5XK
Mikron'S Talk 15M	Mikron'S Talk 3X	Extrafill 5
Mikron'S Talk 40	Mikron'S Talk WL 24/14	Mikron'S Talk GR 24/14

- Enables gloss regulation
- Enhance rigidity
- Help to reduce TiO_2 content
- Increase wet scrub resistance
- Increase dimensionl stability and heat ageing

BARYTE

Barium Sulphate (BaSO₄)

- Excellent puriness and whiteness
- Resistance against acids
- High density and brightness
- Gains impact properties
- Excellent optical properties
- Good dispersion capability
- Low oil absorption
- Outstanding UV resistance
- Sound Barrier

EX Baryte

Pure Barium Sulphate products have high density and don't include any heavy metals. Selected Micronised Baryte grades will offer chemical resistance, high hiding power and extra gloss. Group of products are made from the highest quality White, natural high density barite ore. EX products are not abrasive due to low SiO₂ content. EX barytes have unique properties such as high specific gravity, low solubility and chemical inertness make them indispensable for many applications.

Baryte Ultra 1 Double EX

Baryte 1 Double EX

Baryte 5 Double EX

STD Baryte

Group of products are natural, off-white and high density barytes produced in Şarkikaraağaç - Isparta.

STD products are not abrasive due to low SiO₂ content, high specific gravity and chemically inert. These specifications provide wide range of usage in various industries.

Baryte Ultra 1 STD

Baryte 1 STD

Baryte 5 STD

Baryte 20 STD

Baryte 25 STD

Baryte 30 STD



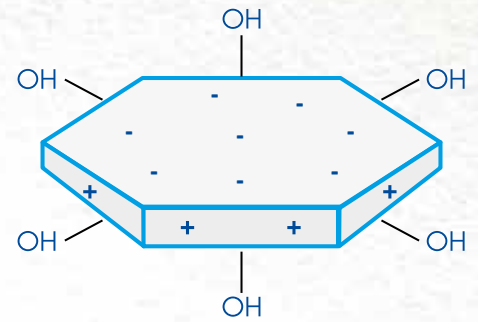
KAOLIN

Natural kaolins also classified in two main groups, primary and secondary as a raw material. Primary kaolins are found naturally where they exist.

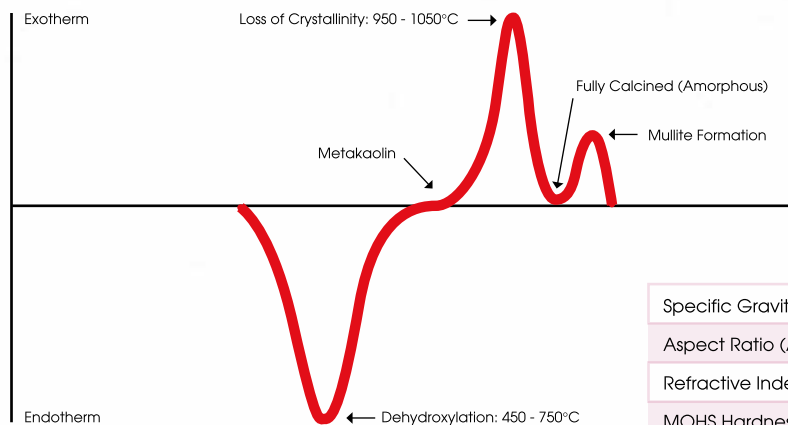
Secondary kaolins are washed and deposited away from primary kaolins. Lower impurities and high brightness are main parameters to differentiate secondary kaolins from primary kaolins.

Selected and washed secondary kaolins are used to produce hydrous kaolins on industrial scale.

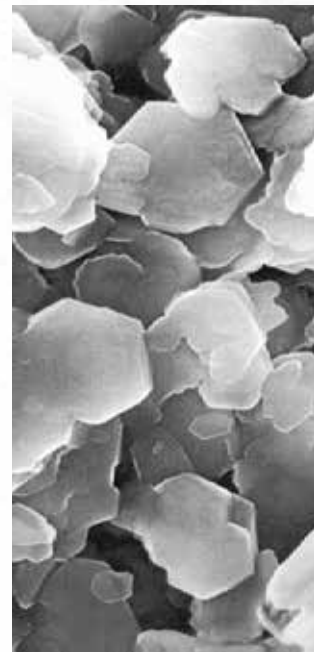
Mikron'S Kaolin grades classified into three main group. Ball Kaolins (Clays), Hydrous Kaolins and Calcined Kaolins. Kaolin (China Clay) is nearly White in colour derived from mineral Kaolinite. Chemical Formula is composed from clusters of $Al_2O_3 \cdot 2H_2O \cdot 0.2H_2O$



DIFFERENTIAL THERMAL ANALYSIS FOR KAOLIN CALCINATION



Specific Gravity	2,6
Aspect Ratio (Average)	8/1 - 100/1 - 20/1
Refractive Index	1,56
MOHS Hardness	2,5
Solubility in Water	NO
Against Acids	INERT



BALL CLAY

Mikron'S Kaolin grades are pure and white ball clays that could be used in many areas like plastics, rubber, paints and coatings. Mikron'S Kaolin grades enhance; opacity, mud crack resistance, scrub resistance, corrosion resistance and resistance to chalking in many paint formulations.



HYDROUS KAOLIN

Mikron'S Hydrous Kaolins widely accepted as a coating clay in paints, thanks to its excellent opacity and hiding power. Hydrous Kaolin also serves as an extender in coatings and hard clay in rubber systems.

CALCINED KAOLIN

Calcined Kaolin is formed when kaolin is heated above 980° . It has an amorphous structure with some hydroxyl (-OH) groups at the surface. If heated above 1200° , hard and abrasive mullite is formed. Calcined Kaolin has the highest refractive index after TiO_2 among all industrial minerals that used in manufacturing industries. For this reason, Calcined Kaolin are widely used to save TiO_2 in paints and coatings.

Mikron'S Calcined Kaolin grades have very fine particle size with extreme whiteness to help users to make optimum formulations.



QUALITY ASSURANCE, RESEARCH AND DEVELOPMENT

Mikron'S treat research and development as the guarantee of it's future. Mikron'S , gave importance to development of new products and applications in order to follow global improvements rapidly.

Mikron'S carrying out research and development activities in its laboratories which faciliated with outstanding equipments and services.

Collaborating with universities and scientific foundations worlwide, Mikron'S take academic assistance to shape it's studies into a product.

Improvements, investments and awards symbolize the passion of Mikron'S, which produces it's own products to create world-class quality.

Mikron'S allocates 4% of it's turnover to the R&D expenditures approaching the target to more restorative it's competitive position in the sector, and to become one of the important producers in the world.

Mikron'S continue to challenge in research and development by working international independent institutions and scientists.



**MICRONISED
CALCIUM
CARBONATE**

TURKCARB® UF
TURKCARB® 95
TURKCARB® 75X
TURKCARB® 65
TURKCARB® 1
TURKCARB® 1K
TURKCARB® 2
TURKCARB® 2K
TURKCARB® 2A
TURKCARB® 3
TURKCARB® 5
TURKCARB® 5KE
TURKCARB® 10
TURKCARB® 15
TURKCARB® 15K
TURKCARB® 20
TURKCARB® 40K
TURKCARB® 60K
TURKCARB® 140K
TURKCARB® K130

**COATED
CALCIUM
CARBONATE**

TURKCARB® UFC
TURKCARB® 95C
TURKCARB® WIN
TURKCARB® WIN EXTRA
TURKCARB® 100C
TURKCARB® 65C
TURKCARB® FP
TURKCARB® FP 55
TURKCARB® FP 45
TURKCARB® 1C
TURKCARB® 1KC
TURKCARB® 2C
TURKCARB® 2KC
TURKCARB® 3C
TURKCARB® 5C
TURKCARB® 10C
TURKCARB® WPX

**CHIPS AND
GRANULES
(CaCO₃)**

TURKCARB® CGR G130
TURKCARB® CGR H130
TURKCARB® CGR 0105
TURKCARB® CGR 0208
TURKCARB® CGR 0305
TURKCARB® CGR 0307
TURKCARB® CGR 0512
TURKCARB® CGR 1.0-1.5
TURKCARB® CGR 1.5-2.0
TURKCARB® CGR 2.0-2.5
TURKCARB® CGR 2.5-3.0
TURKCARB® CGR 3.0-3.5
TURKCARB® CGR 1.0-1.5H
TURKCARB® CGR 1.5-2.0H
TURKCARB® CGR 2.0-2.5H
TURKCARB® CGR G 130H
TURKCARB® CGR 0205H
TURKCARB® CGR 0512H

DOLOMITE

MIKRON'S DOLOMITE 1
MIKRON'S DOLOMITE 2
MIKRON'S DOLOMITE 3
MIKRON'S DOLOMITE 5
MIKRON'S DOLOMITE 10
MIKRON'S DOLOMITE 20
MIKRON'S DOLOMITE 40
MIKRON'S DOLOMITE 63
MIKRON'S DOLOMITE 100
MIKRON'S DGR 0207
MIKRON'S DGR 0512
MIKRON'S DGR 1.0-1.5
MIKRON'S DGR 1.5-2.0
MIKRON'S DGR 1.0-2.0
MIKRON'S DGR 1.0-3.0

**MIKRON'S
TALC**

MIKRON'S TALK 3SX
MIKRON'S TALK 5SX
MIKRON'S TALK 5SXP
MIKRON'S TALK 15SX
MIKRON'S TALK 5KSTD
MIKRON'S TALK 2STD
MIKRON'S TALK 20STD
MIKRON'S TALK 10SX
MIKRON'S TALK PREMIER
MIKRON'S TALK 20
MIKRON'S TALK 15M
MIKRON'S TALK 40
MIKRON'S TALK 40KN
MIKRON'S TALK 5XH
MIKRON'S TALK 3X
MIKRON'S TALK 5X
MIKRON'S TALK 5XK
EXTRAFILL 5
MIKRON'S TALK WL 24/14

BARYTE

BARYTE 1 EX
BARYTE 5 EX
BARYTE 20 EX
BARYTE 30 EX
BARYTE 1 STD
BARYTE 5 STD
BARYTE 20 STD
BARYTE 25 STD
BARYTE 30 STD

**MICRONISED
MICA**

ASPOLIT
MICA B
MICA T
MICA

**KAOLIN
BALL CLAY**

MIKRON'S KAOLIN 3
MIKRON'S KAOLIN 3SX
MIKRON'S KAOLIN 5
MIKRON'S KAOLIN 5SX
MIKRON'S KAOLIN 20
MIKRON'S KAOLIN 20XS
MIKRON'S KAOLIN 5D

HYDROUS KAOLIN

MIKRON'S HG 90
MIKRON'S HG 80
MIKRON'S HG 70

CALCINED KAOLIN

MIKRON'S UR D 70/90
MIKRON'S UR D 80/95

GROUP OF INDUSTRY

**MINING &
INDUSTRIAL
RAW MATERIALS** **Mikron'S**

**KITCHEN &
BATHROOM
FURNITURE** **vanucci**
MUTFAK & BANYO

**TILES &
CERAMICS &
CONSTRUCTION
CHEMICALS** **seranit**

SERVICE AND FINANCE

**FINANCE &
LEASING** **ARI LEASING**

**COMMERCIAL
PROPERTY
MANAGEMENT** **MÜLK**
GAYRİMENKUL YATIRIM

REAL ESTATE DEVELOPMENT

SERVET
GAYRİMENKUL YATIRIM ORTAKLIĞI A.Ş.

SİNPAŞ
KENT YATIRIMLARI A.Ş.

KIZILBÜK·GYO
KENTLER GAYRİMENKUL YATIRIM ORTAKLIĞI A.Ş.

SİNPAŞ REIT

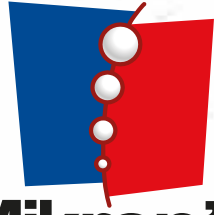
KAT
TÜRKİZE GAYRİMENKUL
YATIRIMLARI VE İŞLETME TİCARET A.Ş.

**OS
WE 360°**
trade connected

ENERGY GROUP

GY
GYE ELEKTRİK

**SİNPAŞ
HOLDİNG**



Mikron'S

Mikronize Mineral End. A.Ş.

Head Office

Sultantepe Mah. Paşa Limanı Caddesi,
Hüseyin Baykara Sok. No:3
Üsküdar, İstanbul - TÜRKİYE
Tel: +90 212 310 53 53 Fax: +90 216 466 66 50

Niğde Plant

Niğde - Kayseri Yolu 7.km 51100
Niğde - TÜRKİYE
Tel: +90 388 237 54 00 Fax: +90 388 237 54 10